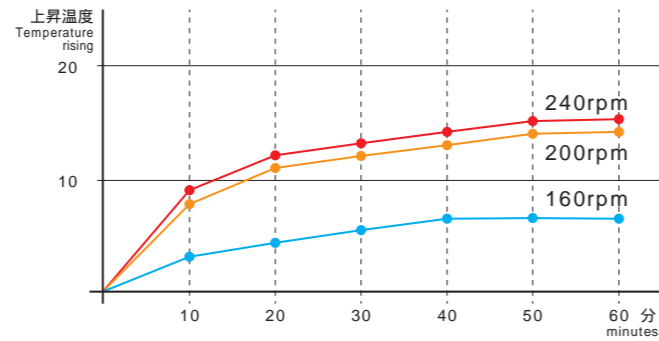


摩擦熱による温度上昇
A rise in temperature caused by friction heat

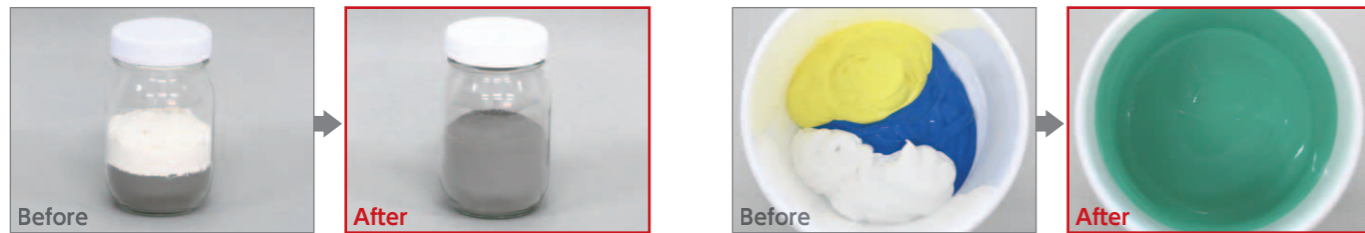
「SANMIX」は、粉体攪拌において最も懸念される摩擦熱を考慮し、最大回転数を240rpmとしました。グラフ4はアルミナ5μを700g、3パターンの回転数を10分間隔で1時間の温度上昇の実測値です。

Due to the concern of friction heat, the maximum revolution speed was set to 240 rpm. Graph 4 shows the measured value of a rise in temperature of 700g of 5-micrometer alumina powders in three patterns of revolution speed in every ten minutes for an hour.

グラフ 4 アルミナ 5μ 700g 室温 20
Graph 4 alumina5μ 700g Room temperature at 20 degree centigrade

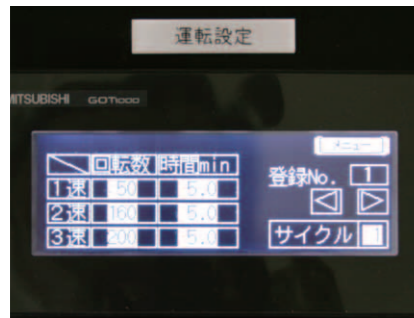


攪拌サンプル Mixture examples



「粉体と液体」の混合、「液体と液体」の混合も容易であり、しかも脱泡効果が得られます。
Powder and liquid, liquid and liquid are mixed easily and defoamed as well.

仕様 Specifications



操作パネル部
Operation panel

シンプルで操作しやすいタッチパネル式です。
3段階の可変速、9通りの攪拌条件をメモリ設定できます。
The touch panel is simple and easy to use.
3-step changeable speed and 9 patterns of process conditions are available to be preset.

型式 Model	容器容量 Container capacity	容器個数 Number of containers	最大容器寸法 Maximum size of container	回転数 Revolution speed	駆動モーター Drive motor	入力電源 Input power	外寸法 External dimensions	装置重量 Weight
MX-10T	約 1L	4	140xh160mm	MAX240rpm	0.75kw	AC100V or AC200V	640x680x1074mm	165kg
MX-05T	約 0.5L	4	112xh130mm	MAX240rpm	0.4kw		510x580x670mm	95kg

シグナルタワー除く Excludes signal tower

揺動式遠心粉体(液体)ミキサー
Twirling motion centrifugal powder/liquid mixer

SANMIX



コンタミ対策 Measures to prevent contamination

低速低温混合 Mixing at a low speed and in a low temperature range

短時間均質混合 Uniform mixing in a short time

強い「せん断力」 Strong shearing force

製造元 Manufacturer

SANKEI High-Precision Co.,Ltd.
三恵ハイプレジジョン株式会社
〒547-0023 大阪市平野区瓜破南2-3-4
2-3-4,Uriwarimimami,Hirano-ku,Osaka City 547-0023
TEL.06-4302-1871 FAX.06-4302-1885
URL <http://www.sankei-pr-mx.com>

販売店 Agency

4.9 BILLY'S TM VZ SUNSHINE

THE SUNSHINE
 N NEURS JUD IEDULTS IS THE
 Q IS TN BQM K JUV Q Q IS Z
 TBM EN QUS IS IM YED
 KSMN IIEHBBE
 REM EX TQU B JQK IS TIBEN JYE
 VDNM ZM K IN Q IS BUBS U
 N IS EX QUS SM EX ED
 N BQX IS THQ IS BEEK OX IS HS JH
 N NEURHAM HUBS S VQ IS T
 EES RUCJHS TQUS BUBEN JYE
 BUBNF

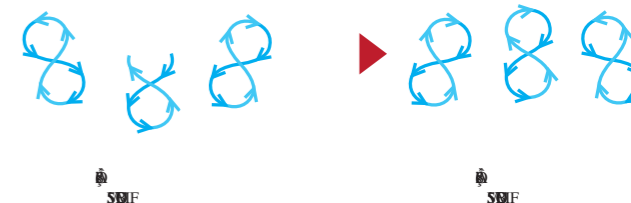
QUS QEMN JQ BUBB ED
 N BUBS IS BUBS
 IS QM BUBS
 TQ BUBS BUBS
 BUBS JU VS PULBUBS TPUF
 NB BUBS BUBS BUBS H
 BUBS IS BUBS BUBS IS BUBS
 N Q BUBS BUBS BUBS
 S BUBS BUBS

SBKMM QUS BUBS BUBS
 VS BUBS BUBS
 BUBS EN BUBS BUBS
 BUBS BUBS



THE SUNSHINE
 X LIE BUBS BUBS BUBS
 BUBS BUBS
 BUBS BUBS BUBS BUBS BUBS
 N BUBS BUBS BUBS BUBS
 BUBS BUBS

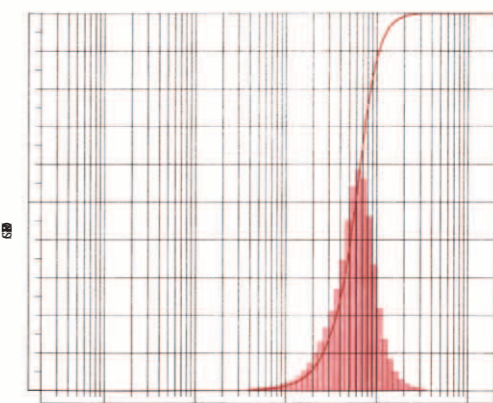
S BUBS BUBS BUBS BUBS BUBS
 N BUBS BUBS BUBS BUBS
 BUBS BUBS
 BUBS BUBS



SUNSHINE

SUNSHINE

SUNSHINE



SUNSHINE

SUNSHINE

SUNSHINE